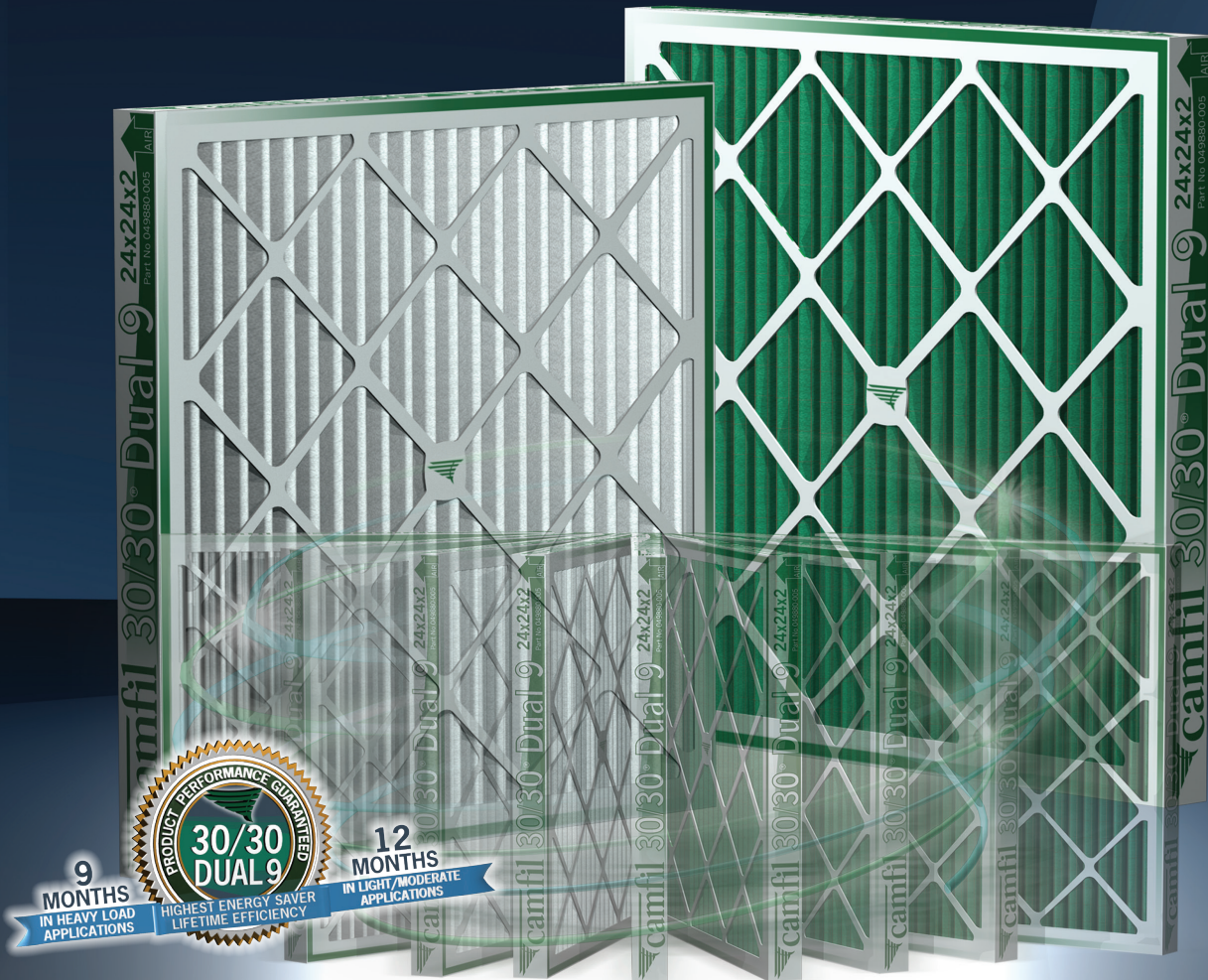




30/30[®] Dual 9

High-Capacity MERV 9/9A Pleated Panel Filter

Camfil has reinvented an entire product category



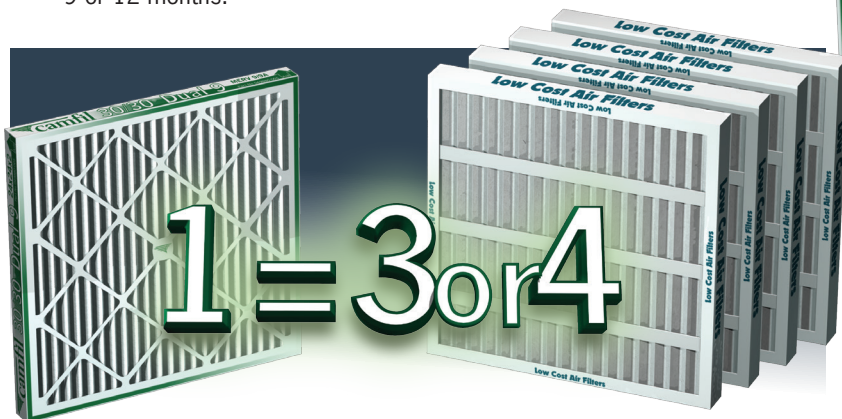
Only MERV 9A Panel Filter
Guaranteed to Last 9 - 12 Months

CLEAN AIR SOLUTIONS

DUAL 9 SETS A NEW STANDARD IN THE AIR FILTRATION INDUSTRY. This is a Game Changer.

What is Dual 9?

Dual 9 is a breakthrough product where every component has been engineered to deliver the highest level of continuous particle removal, with the lowest energy consumption and longest service life. The Dual 9 comes with dual but equal MERV ratings (MERV 9 and MERV 9A), a dual layered gradient density media and dual performance guarantee options of 9 or 12 months.



Camfil, the First Innovator is still the Only Innovator.

Camfil asked users what they wanted in pleated panel filters and three objectives stood out:

1. Longest possible service life to reduce the need for frequent filter changes thus saving labor resources for more critical maintenance projects.
2. Reduced energy consumption in line with corporate cost saving and sustainability objectives.
3. Improved filtration for better protection of HVAC equipment — reduces the need for coil and system cleaning by 25%-50% compared to lower efficiency MERV 8 and MERV 7 solutions.



Built Strong

Designed to withstand turbulent or harsh airflow that may be common in some HVAC systems.

Welded Steel Grid with Corrosion Inhibitor

A crossed wire grid, spot welded on one inch centers, provides industrial grade support to hold pleat formation throughout service life.

Proprietary Dual High Lofted Fibers

New media technology - Dual layered media combines two filtration layers in one package. Upstream white layer designed for larger particles and downstream green layer designed for finer particles. Combined solution provides a dust holding capacity 4 times higher than general commercial grade pleats.

Radial Pleats

Radial pleats expose all of the media area to the dirty airstream providing lower pressure drop and higher dirt holding capacity.

Diagonal Support

Diagonal support members bonded to the media maintain pleat separation and ensure filter rigidity.

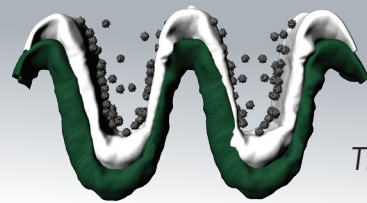
Moisture Resistant Frame Board

28-point high wet-strength frame board is resistant to moisture and has a high tensile strength.

Available in 2" and 4" Depths

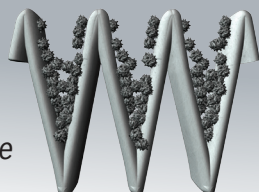
For every Dual 9 filter, it will take three or four low cost pleated filters — waste disposal, landfill impact and transaction costs. At the same time significant reduction in energy consumption per year up to 25% per filter opening while having MERV9A efficiency (per ASHRAE standard 52.2 Appendix J).

Camfil's Dual 9 Pleat VS Competitors' V-Pleat



30/30[®] Dual 9 Pleat High Lofted Dual Media
 • Gradient density, mechanical filtration media

The difference is clear.



Competitors' V-Pleat Coarse Fiber
 • Utilizes electrostatically enhanced media
 • Short service life, high energy consumption and particle capture degradation below rated efficiency.

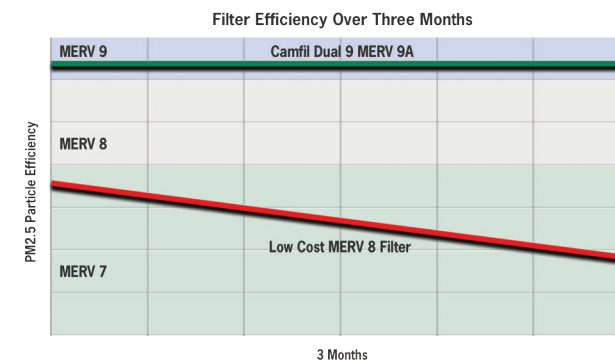


5-Star ECI Rating

Camfil's filters are rated as 5-Star filters through the Energy Cost Index (ECI) program. Based upon a five-star scale, the Energy Cost Index is an indicator of what a filter will cost over its lifetime. The best rating – five stars – indicates that the filter is the most energy-efficient, longest lasting filter available.

We Guarantee It!

Don't think it's too good to be true! Camfil was the first air filtration manufacturer to offer a written performance guarantee on product performance and now we have raised the bar to the highest level ever — providing our customers the highest "Total Cost of Ownership" value proposition with *no risk*.



Area between the efficiency lines reflects particulate passing through the filter, collecting on secondary filters, heating and cooling coils, all which hinder total ventilation operating efficiency.

Built to last. Tested for proof.

30/30[®] Dual 9 media is manufactured from a proprietary blend of fine fibers utilizing a mechanical particle capture principle.

The Dual 9 media was put through three years of real life testing to ensure performance under real life conditions and to establish the only guarantee of its kind. Highest energy saver, lifetime efficiency, and lasts 9 to 12 months...*Guaranteed!*

The electret charge of the competitors' coarse fiber filters dissipates over time resulting in a loss of efficiency long before what should be a full life cycle.





30/30[®] Dual 9

High-Capacity MERV 9/9A Pleated Panel Filter

Part Number	Description	Height (inches)	Width (inches)	Depth (inches)	Airflow Capacity (cfm)	Media Area (sq ft.)	Resistance at Capacity (inches of w.g.)	Pleats per Linear Foot
406331-001	30/30 D9 20X16X2	19.50	15.50	1.75	1110	9.9	0.30	15
406331-002	30/30 D9 20X20X2	19.50	19.50	1.75	1390	11.9	0.30	15
406331-003	30/30 D9 25X20X2	24.50	19.50	1.75	1740	14.9	0.30	15
406331-004	30/30 D9 25X16X2	24.50	15.50	1.75	1390	12.4	0.30	15
406331-005	30/30 D9 24X24X2	23.38	23.38	1.75	2000	17.3	0.30	15
406331-006	30/30 D9 24X12X2	23.38	11.38	1.75	1000	8.4	0.30	15
406331-007	30/30 D9 20X12X2	19.50	11.88	1.75	835	7.4	0.30	15
406331-008	30/30 D9 20X10X2	19.50	9.50	1.75	700	6.0	0.30	15
406331-009	30/30 D9 20X14X2	19.50	13.50	1.75	975	8.3	0.30	15
406331-010	30/30 D9 25X14X2	24.50	13.50	1.75	1220	10.4	0.30	15
406331-011	30/30 D9 20X15X2	19.50	14.50	1.75	1045	9.3	0.30	15
406331-012	30/30 D9 24X20X2	23.50	19.50	1.75	1670	14.3	0.30	15
406331-013	30/30 D9 20X18X2	19.50	17.50	1.75	1250	10.8	0.30	15
406331-014	30/30 D9 25X18X2	24.50	17.50	1.75	1565	13.5	0.30	15
406331-015	30/30 D9 24X18X2	23.50	17.50	1.75	1500	13.0	0.30	15
406331-016	30/30 D9 24X16X2	23.50	15.50	1.75	1335	11.8	0.30	15
406331-018	30/30 D9 25X25X2	24.50	24.50	1.75	2170	19.0	0.30	15
406331-019	30/30 D9 16X16X2	15.50	15.50	1.75	890	7.8	0.30	15
406331-021	30/30 D9 20X25X2	19.50	24.50	1.75	1740	14.9	0.30	15
406331-022	30/30 D9 16X25X2	15.50	24.50	1.75	1390	12.4	0.30	15
406331-023	30/30 D9 20X24X2	19.50	23.50	1.75	1670	14.3	0.30	15
406332-001	30/30 D9 20X16X4	19.50	15.50	3.75	1110	15.7	0.27	11
406332-002	30/30 D9 20X20X4	19.50	19.50	3.75	1390	18.9	0.27	11
406332-003	30/30 D9 25X20X4	24.50	19.50	3.75	1740	23.6	0.27	11
406332-004	30/30 D9 25X16X4	24.50	15.50	3.75	1390	19.7	0.27	11
406332-005	30/30 D9 24X24X4	23.38	23.38	3.75	2000	27.7	0.27	11
406332-006	30/30 D9 24X12X4	23.38	11.38	3.75	1000	13.9	0.27	11
406332-012	30/30 D9 24X20X4	23.50	19.50	3.75	1670	22.7	0.27	11
406332-015	30/30 D9 24X18X4	23.50	17.50	3.75	1500	20.2	0.27	11
406332-020	30/30 D9 25X29X4	24.38	28.38	3.75	2520	35.4	0.27	11
406332-021	30/30 D9 20X25X4	19.38	24.38	3.75	1740	23.5	0.27	11
406332-022	30/30 D9 16X25X4	15.38	24.38	3.75	1390	18.8	0.27	11
406332-023	30/30 D9 20X24X4	19.38	23.38	3.75	1670	22.6	0.27	11

Unprecedented Industry Guarantee

We are so confident in our filter's performance, we are the only manufacturer that **GUARANTEES** our filters will hold their rated efficiency for their entire service life, as well as last 9 or 12 months in service, based on the application. If our filters fail to hold a MERV 9 efficiency or fail to last 9 or 12 months in service, we'll replace them, **FREE** of charge.

Camfil **GUARANTEES** the 30/30 Dual 9 will last 9 months in heavy load applications and 12 months in light to moderate applications when operated at or below the rated airflow capacity for that filter. For guarantee details, visit www.camfil.us.



1 North Corporate Drive | Riverdale, NJ 07457
 Phone: 973.616.7300 | Fax: 973.616.7771
camfil@camfil.com
www.camfil.us

www.camfil.us

For further information, please contact your nearest Camfil office.